

**ADDENDUM NO. 2**  
To the Plans and Specifications for:

**FY25 Stormwater Improvements**

City of Seminole

1. **BID DATE: NO CHANGE**

**Friday, April 4, 2025 @ 11:00 A.M.**

2. **TECHNICAL SPECIFICATIONS:**

**A. Bid Forms, Bid Tab, Schedule B**

Schedule B has been reissued in its entirety.

**B. Exhibit B, Specifications, Section 01025 – Measurement & Payment**

Section 01025, Measurement & Payment, has been reissued in its entirety.

3. **PLANS:**

**A. Sheet C5, Demolition & Erosion Control**

Additional silt fences and inlet protection devices have been added. The driveway is no longer being demolished.

**B. Sheet C8, Plan & Profile (Baywood Park Drive)**

The location of the manhole structure has changed. The alignment of the sanitary sewer has been updated. A callout has been added regarding the buried electric line that crosses the street within the project area.

**C. Sheet C10, General Details**

The detail for Residential Driveway Dimensions was removed. Details for Erosion Control Devices and Tree Protection were added.

4. **RESPONSE TO SUBMITTED QUESTIONS**

RSQ.3 Is UV CIPP ASTM2019 acceptable?

*Please note that the allowable liner specifications are outlined in the provided plans. Additional liner options are not currently approved.*

RSQ.4 The note on the plans call out “Inversion” being the only acceptable FDOT method for the lining. We respectfully request the acceptance of the FDOT method of “Push/Pull” for CIPP lining.

*Please note that the allowable liner specifications are outlined in the provided plans. Additional liner options are not currently approved.*

RSQ.5 Will the owner consider Quadex GeoKrete Spray-Applied lining system as an approved equal to CIPP?

*Please note that the allowable liner specifications are outlined in the provided plans. Additional liner options are not currently approved.*

RSQ.6 Is a detail available for the 380LF of 6' high Safety Fencing?

*A detail has not been provided. However, a six-foot chain-link fence with a windscreen and sandbags on the legs will be sufficient.*

RSQ.7 Is a tree barricade detail available?

*Please refer to the details on the revised C10.*

RSQ.8 Is the contractor to provide the Utilities Allowance or does the City of Seminole want to provide an amount that all contractors should carry in order to balance bids?

*Please refer to the revised Schedule B. A \$10,000.00 utilities allowance has been identified for this project. This allowance will only be used for the direct reimbursement (without markup) of costs associated with utility relocations, subject to prior written approval from the City of Seminole.*

RSQ.9 Concrete Curb removal and replacement is listed as 50SF on the bid form. Linear footage is closer to 115LF, which would be greater than 50SF. Should this line be changed to LF?

*Please refer to the revised Schedule B and base the unit cost on the quantities specified.*

RSQ.10 Roadway Base Restoration quantity on bid form is 1,000SY but actually scales closer to 33SY if done at 15'x20'. Are we to base our unit costs on being able to do 1,000SY or 33SY?

*Please refer to the revised Schedule B and base the unit cost on the quantities specified.*

RSQ.11 Roadway Mill & Resurface Restoration also has a 1,000SY quantity on the bid form but scales closer to 276SY. Are we to base our unit costs on being able to do 1,000SY or 276SY?

*Please refer to the revised Schedule B and base the unit cost on the quantities specified.*

**5.     GENERAL CLARIFICATION / INFORMATION:     NO CHANGE**

CITY OF SEMINOLE

March 31, 2025

## Bid Tab Schedule B

*No changes shall be made to the Pay Item Quantities contained herein. Any corrections to bidders' entries shall be made in ink and shall be initialed by the bidder*

Pay Item No.	APPROXIMATE QUANTITIES	ITEM & UNIT PRICES BID (PRICES TO BE WRITTEN IN WORDS)	UNIT PRICE	AMOUNT
B-G-1	1 Lump Sum	MOBILIZATION	\$	\$
		Lump Sum		
B-G-2	1 Lump Sum	MAINTENANCE OF TRAFFIC	\$	\$
		Lump Sum		
B-G-3	1 Lump Sum	DEMOLITION / CLEARING & GRUBBING	\$	\$
		Lump Sum		
B-G-4	1 Lump Sum	TREE PROTECTION	\$	\$
		Lump Sum		
B-G-5	1 Lump Sum	EROSION AND SEDIMENT CONTROL	\$	\$
		Lump Sum		
B-DR-1	365 Linear Feet	PIPE CLEANING, 48", MEDIUM	\$	\$
		Per Linear Foot		
B-DR-2	365 Linear Feet	PIPE CLEANING, 48", HEAVY	\$	\$
		Per Linear Foot		
B-DR-3	1 Lump Sum	PRIVATE DRAIN RESTORATION	\$	\$
		Lump Sum		

## Bid Tab Schedule B

*No changes shall be made to the Pay Item Quantities contained herein. Any corrections to bidders' entries shall be made in ink and shall be initialed by the bidder*

Pay Item No.	APPROXIMATE QUANTITIES	ITEM & UNIT PRICES BID (PRICES TO BE WRITTEN IN WORDS)	UNIT PRICE	AMOUNT
B-DR-4	365 Linear Feet	PIPE CCTV INSPECTION	\$	\$
		Per Linear Foot		
B-DR-5	365 Linear Feet	CIPP LINING SYSTEM, 48", 15 MM	\$	\$
		Per Linear Foot		
B-DR-6	365 Linear Feet	CIPP LINING SYSTEM, 48", THICKNESS VARIATION, ± 1.5 MM	\$	\$
		Per Linear Foot		
B-DR-7	1 Each	FDOT TYPE J-8T MANHOLE STRUCTURE, 6'	\$	\$
		Per Each		
B-DR-8	15 Linear Feet	48" RCP	\$	\$
		Per Linear Foot		
B-DR-9	2 Each	FDOT CONCRETE COLLAR	\$	\$
		Per Each		
B-U-1	10,000 Each	UTILITIES ALLOWANCE	\$1.00	\$10,000.00
		Per Each		
B-S-1	1,500 Square Feet	SOD RESTORATION, ST. AUGUSTINE	\$	\$
		Per Square Foot		

**Bid Tab**  
**Schedule B**

*No changes shall be made to the Pay Item Quantities contained herein. Any corrections to bidders' entries shall be made in ink and shall be initialed by the bidder*

Pay Item No.	APPROXIMATE QUANTITIES	ITEM & UNIT PRICES BID (PRICES TO BE WRITTEN IN WORDS)	UNIT PRICE	AMOUNT
B-S-2	150 Square Feet	CONCRETE SIDEWALK RECONSTRUCTION, 4"	\$	\$
		Per Square Foot		
B-S-3	120 Linear Feet	CONCRETE CURB REMOVAL & REPLACEMENT	\$	\$
		Per Linear Foot		
B-S-4	1 Lump Sum	LANDSCAPING RESOTRATION	\$	\$
		Lump Sum		
B-S-5	35 Square Yards	ROADWAY, BASE RESTORATION	\$	\$
		Per Square Yard		
B-S-6	280 Square Yards	ROADWAY, MILL & RESURFACE (1-1/2") RESTORATION	\$	\$
		Per Square Yard		
B-M-1	15 Cubic Yards	EXCAVATION, UNSUITABLE MATERIAL	\$	\$
		Per Cubic Yard		
<b>TOTAL (SCHEDULE B)</b>			\$	

## **Section 01025 Measurement & Payment**

### **Part 1 General**

#### **1.01 Scope of Payment**

Payment to the CONTRACTOR will be made for actual quantities and work completed and accepted in accordance with the Contract.

The CONTRACTOR shall accept in compensation provided herein full payment for furnishing all materials, labor, tools, equipment, and incidentals necessary to complete all work included in the Contract; also for all loss or damage arising from the nature of the work, inclement weather, action of the elements or from any unforeseen difficulties which may be encountered during the execution of the work or except as provided herein. The CITY will make no allowances for Items not included in the proposal.

#### **1.02 Procedure for Measurement**

- A. For lump sum items, payment shall be based on the lump sum prices set forth in the Bid Proposal and based on the amount of completed work.
- B. For field measured unit-price items, payment shall be based on the actual amount of work accepted and the actual amount of materials in place, as will be determined by measurements.

#### **1.03 Estimated Quantities**

All estimated field measure quantities stipulated in the Contract Documents are approximate and are to be used only (a) as a basis for estimating the probable cost of the WORK and (b) for purpose of comparing the bids submitted for the WORK. The actual amounts of WORK done under field measured unit price items may differ from the estimated quantities. The basis of payment for WORK will be the actual amount of WORK performed and field measured.

Should the quantities of unit price items listed in the original Vendor Proposal Form increase or decrease, the prices for these items must be at the unit price quoted by the CONTRACTOR on his original Vendor Proposal Form.

#### **1.04 Incidental Work**

All work shown on the plans and referenced in the specifications as being part of the contract for which no separate pay item is provided is considered incidental to the contract. Incidental items are to be incorporated into the pay items provided. Claims for separate payment of incidental items will not be considered.

#### **1.05 Items Included but Not Specified**

The unit or lump sum prices designated in the Bid Proposal shall include all profit, taxes, labor, overhead, material, equipment, tools, utility notification and coordination, protection of existing utilities, temporary support of existing utilities, irrigation protection/demolition & repair, shoring (proprietary & non-proprietary), sheeting and slope protection (proprietary & non-proprietary), night work when needed, design of sheeting/shoring/slope stabilization, backfill, dewatering, extra backfill material as required, excavation materials, protection and preservation of existing

structures, salvaging of items as shown on the drawings, coordination with City staff and residents, the erection of previously removed fencing and gates, removal and resetting of mailboxes, all pipe preparation necessary for applying plugs in pipes (including barnacle removal), securing a Building Permit and other work incidental thereto and specified in these specifications and on the drawings.

#### **1.06 Description of Pay Items**

The following describes the measurement of and payment for the work to be done under the respective items listed in the Bid Proposal.

Each field measure unit or lump sum item stated in the Bid Proposal shall constitute full compensation for each item of work completed.

##### **Mobilization (ITEMS A-G-1)**

##### **Mobilization (ITEMS B-G-1)**

The work specified under this Section consists of preparatory work and operation in mobilizing to begin work on the project, including but limited to those operations necessary for the movement of personnel, equipment, supplies and incidentals to the project site(s), and for the establishment of temporary offices, buildings, safety equipment, project sign and first aid supplies, sanitary and other facilities as required by these specifications, special provisions, and state and local laws and regulations. Mobilization costs shall also include the costs of preconstruction videotaping, coordination with residents throughout the project's duration, coordination with City representatives throughout the project's duration, project signs, insurance, bonds, permits (including NPDES and dewatering) and other Contract materials.

The contract unit price will be on a lump sum (LS) unit price. Partial payments will be allowed as outlined below.

PERCENT OF ORIGINAL CONTRACT AMOUNT EARNED	ALLOWABLE PERCENT OF THE LUMP SUM PRICE FOR MOBILIZATION (*)
5	25
10	50
25	75
100	100

##### **Maintenance of Traffic (ITEMS A-G-2)**

##### **Maintenance of Traffic (ITEMS B-G-2)**

This Section consists of maintaining vehicular and pedestrian traffic within the project's limits for the duration of the construction period, in accordance with the requirements of FDOT Section 102 of the "Standard Specifications," as amended herein.

The Contractor will not be permitted to close access to residences or places of business. Provisions shall be made to provide access to large trucks for pick-up and delivery of materials during the construction period. The Contractor shall furnish, erect, and maintain all necessary traffic control and safety devices in accordance with the Florida Department of Transportation "ROADWAY AND TRAFFIC DESIGN STANDARDS", applicable edition, and State of Florida's "MANUAL OF TRAFFIC CONTROL AND SAFE PRACTICES FOR STREET AND HIGHWAY CONSTRUCTION MAINTENANCE AND UTILITY OPERATIONS", applicable edition, and shall take all necessary precautions for the protection of the work and the safety of the public for



duration of the construction period.

A Maintenance of Traffic (MOT) plan shall be submitted to the City, by the Contractor, and approved prior to implementation. This plan shall include all necessary signage and dimensions and be prepared by an Advanced MOT certified party or Florida-registered professional engineer.

The work specified under this Section shall include the furnishing, erection, and maintenance of all temporary traffic barricades of whatever type required and for such duration as may be required and shall include all materials and construction necessary for temporary connections and driveway maintenance. The Contract unit price for this item will be a lump sum unit price. Partial payments for maintenance of traffic will be limited to the overall percent of the work completed by the Contractor.

This pay item shall include multiple setups and modifications, as needed, to satisfactorily perform the work.

This pay item shall include the construction and demolition of ADA-compliant temporary walking surfaces where required to maintain pedestrian access.

**Demolition / Clearing and Grubbing (ITEMS A-G-3)**  
**Demolition / Clearing and Grubbing (ITEMS B-G-3)**

Payment under this pay item shall be provided on a lump sum basis and include all equipment, material and labor to perform the work. Payment shall include, but not be limited to, the following: demolition of existing roadway, driveways, root and limb pruning if needed, tree removal where specified, stump removal where required, landscaping/sod removal, irrigation removal, removal and temporary storage of items to be reinstalled, protection of existing facilities, stormwater structure and pipe demolition, stormwater pipe abandonment (including plugging), clearing and grubbing, and all incidentals necessary to complete the work.

Hand clearing and grubbing, where required, shall be a component of this pay item.

Payment for Clearing and Grubbing shall be made on a lump sum (LS) basis.

**Tree Protection (ITEM A-G-4)**  
**Tree Protection (ITEM B-G-4)**

Payment for Tree Protection shall include furnishing, installing and removing tree protection around trees near construction activities where required and as indicated on the construction plans and removal upon completion.

Payment for tree protection shall be made on a per lump sum (LS) basis.

**Erosion & Sediment Control (ITEMS A-G-5)**  
**Erosion & Sediment Control (ITEMS B-G-5)**

Price shall include payment for all installation, maintenance, removal, and all other incidentals necessary to provide erosion and sediment control (within the project boundaries) as notated on the plans and as required by any local, state or Federal code, statute or ordinance. Daily debris removal from right of ways, easements and vehicle use areas shall be included in this pay item.

Payment for this item shall be on a lump sum (LS) basis and shall include all necessary equipment, labor and materials to complete this pay item. The Contractor shall receive compensation for this item as stipulated in the table on the following page.

PERCENT OF ORIGINAL CONTRACT AMOUNT EARNED	ALLOWABLE PERCENT OF THE LUMP SUM PRICE FOR EROSION AND SEDIMENT CONTROL
5	25
10	50
25	75
100	100

**Swale Construction, Full (ITEM A-DR-1)**  
**Swale Construction, Partial (ITEM A-DR-2)**

Payment for swale construction shall be paid for at the unit price per linear foot which will be full compensation for grading required to achieve new plan elevations. Payment shall include, but not be limited to, identifying grading limits, protection of facilities proposed to remain during grading activities, grading, compaction, adjustment to existing utilities within the parkway, preparation of the surface for sod, testing, labor, equipment, and other incidentals necessary to complete this item.

Grading associated with restoring existing grade shall not be eligible for compensation under this pay item.

**Private Drain Restoration (ITEM A-DR-3)**  
**Private Drain Restoration (ITEM B-DR-3)**

The above pay items shall include payment for furnishing and installing private stormwater structures. Payment for this item shall include, but not be limited to, the following: acquisition of field dimensions, dewatering, excavation, the removal and proper disposal of existing piping to be replaced and/or shown to be removed in the plans, the disposal of excess material, transportation, sheeting, shoring, slope stabilization, protection/support of existing utilities, bedding material, structure modifications, additional piping as needed to extend existing piping and perform a connection, furnishing and installing new infrastructure and incorporation of conflict piping, frame, and grate adjustments (as necessary), access covers & grating, grouting, sealing, formwork, reinforcement, the connection of new/existing piping, connections to existing structures, backfilling, backfill material, compaction, grading, testing, protection of work, clean up and any other incidentals required to perform this task.

**Rip Rap Blanket (ITEM A-DR-4)**  
**Mitered End Section, Grates (ITEM A-DR-5)**  
**FDOT Type J-8T Manhole Structure, 6' Dia. (ITEM B-DR-7)**  
**FDOT Concrete Collar (ITEM B-DR-9)**

The above pay items shall include payment for furnishing and installing stormwater structures. Payment for this item shall include, but not be limited to, the following: acquisition of field dimensions, dewatering, excavation, the removal and proper disposal of existing piping to be replaced and/or shown to be removed in the plans, the disposal of excess material, transportation, sheeting, shoring, slope stabilization, protection/support of existing utilities, bedding material, structure modifications, additional piping as needed to extend existing piping and perform a connection, furnishing and installing new infrastructure and incorporation of conflict piping, frame and grate adjustments (as necessary), access covers & grating, grouting, sealing, formwork, reinforcement, the connection of new/existing piping, connections to existing

structures, backfilling, backfill material, compaction, grading, testing, protection of work, clean up and any other incidentals required to perform this task.

Payment for this item, with the exception of Rip Rap Blanket (ITEM A-DR-4), shall be on a per each stormwater structure furnished and installed basis (or connection made) and shall include all necessary equipment, labor and materials to complete this pay item. Payment for Rip Rap Blanket (ITEM A-DR-4), shall be on a square foot basis.

#### **48" RCP (ITEM B-DR-8)**

Payment for pipe culvert (sizes stated above) will be paid for at the Contract Unit Price per linear foot for the size pipe installed, based on field measurements. The price paid shall be payment in full for the pipe, gaskets, joint material, external joint wrap, filter fabric, dewatering, all excavation, the disposal of excess material, existing pipe removal and disposal, demolition of surfaces and other features as needed to construct the piping, protection of property and structures, transportation, sheeting, bedding material, backfilling, backfill material, grading, compaction, testing, televising, equipment, labor, materials, protection of work, trench safety precautions, connections to existing piping, concrete collar construction (per FDOT Index No. 430-001), clean up and all other incidentals necessary to complete each item.

The quantity of storm pipe to be paid for shall be based on the laying length of the pipe in linear feet actually placed as measured along the long side of the satisfactorily installed pipe (measured from the outside wall of structures).

All excess material shall be transported offsite at the expense of the Contractor.

#### **Pipe Cleaning, 48", Medium (ITEM B-DR-1)**

#### **Pipe Cleaning, 48", Heavy (ITEM B-DR-2)**

#### **Pipe CCTV Inspection (ITEM B-DR-4)**

#### **CIPP Lining System (48" Diameter), 15 mm (ITEM B-DR-5)**

#### **CIPP Lining System (48" Diameter) Thickness Variation $\pm 1.5$ mm (ITEM B-DR-6)**

The work includes installing the CIPP liner in the 48" CC storm pipe. It also includes mobilization, neighborhood notification, line cleaning, pre- and post-hydrophilic end seals of the liner at manhole connections, and pre- and post-televising. Barnacle removal should also be included with both ITEM B-DR-1 and ITEM B-DR-2. The presence of barnacles will not be a determining factor in the type of pipe cleaning performed. The Contractor's attention is drawn to the fact that cleanup and restoration are considered integral to the work.

Payment will be made at the applicable unit price per linear foot (LF) of CIPP liner installed and accepted (including cleaning and video inspections). The quantity for payment will be the number of linear feet of RCP acceptably rehabilitated by cured-in-place pipe lining measured along the centerline of the pipe from center to center of stormwater structures. No additional compensation will be paid for an eroded or oversized inside pipe diameter.

#### **Utilities Allowance (ITEM B-U-1)**

The work under this item includes an allowance for any unspecified utility work that may be associated with the work in this contract or as otherwise identified by the CITY. Any amount of extra work and/or alterations to this contract charged to this pay item shall be fully documented and approved in writing, in advance, by the CITY. All work performed under this pay item shall be completed in accordance with all conditions and requirements of this contract and shall include the work to be done by all necessary subcontractors and/or suppliers.

"Utilities Allowance" shall mean the stated fixed sum of money to be used only at the CITY's specified direction. The particular requirements and items for the allowances will be provided to

the Contractor at the appropriate time and allowance amounts shall apply only to additional items cover and above those specified/indicated in the plans for this contract.

Use of any portion of this pay item shall require written approval by the CITY.

The basis of negotiated prices and subcontractor's invoices will be included in the Contractor's pay application. Copies of invoices, equipment costs, and other supporting documentation shall be included.

**Sod Restoration, St. Augustine (ITEM A-S-1)**

**Sod Restoration, Bahia (ITEM A-S-2)**

**Sod Restoration, St. Augustine (ITEM B-S-1)**

Sod will be paid at the Contract Unit Price per square foot. Price paid shall be payment in full for furnishing and installing sod, topsoil, stakes, all necessary subgrade preparation, grading, fertilizing, watering, rolling and tamping, mowing, maintenance, care, and replacement of defective sod and surplus materials.

Sod shall be measured in square feet of sod installed, in kind, on all disturbed work areas within the limits of construction or as directed in the field by the CITY. Payment for sodding will not be made for disturbed areas not directly related to construction, including equipment and material storage areas. Restoration in these areas shall be at the Contractor's expense.

**Remove & Reset Existing Fencing, 6', Wood (ITEM A-S-3)**

**Remove & Reset Existing Fencing, 6', PVC/Vinyl (ITEM A-S-4)**

**Remove & Reset Existing Fencing, 6', Wood, Gate (ITEM A-S-5)**

The above pay item shall include payment for the removal and resetting of fencing (height and materials vary) removed during construction. Existing fences will be removed and replaced with gates matching the material of the existing fence. The gates will also need to be fitted with locks. The locks cannot all be keyed the same unless they share a master key with a secondary key that only opens each individual lock. Payment for this item shall include, but not be limited to, the following: resident coordination, documenting the condition of all fences removed, removal of existing fencing, protection of existing fencing, construction of temporary fencing, construction of new posts where realignment is needed, resetting of existing fence panels, installation of new fence panels where existing fence panels cannot be reset and any other incidentals required to perform this task. Payment for this item shall be on a per linear foot of fencing removed and reset basis and shall include all necessary equipment, labor, and materials to complete this pay item.

Separate payment will not be provided for temporary fencing.

The determination regarding whether new fence panels are needed will be made in the field by the City's inspector.

**Landscaping Restoration (ITEM A-S-6)**

**Landscaping Restoration (ITEM B-S-4)**

Payment for this item shall be paid for on a lump sum basis. The price paid shall be full compensation for the reconstruction of landscaping beds/decorative planters removed or altered during construction activities. Payment for this item shall include all CITY and homeowner coordination, removal of existing landscape bed/decorative planter features, temporary storage of removed features (if feasible), replacement of removed features (if necessary), replacement of ground cover as existing prior to construction commencement, and all transportation,

dewatering, irrigation replacement/reconnection and all other incidentals required to complete this item.

Replacement hedges shall be the same species as the hedge removed. The Contractor shall replace said hedge with a hedge of a similar size. If a similar-sized hedge cannot be located, the replacement hedge shall be of an industry-standard size. Industry standard size is defined as common hedge sizes available within the Tampa Bay area.

The contract unit price will be on a lump sum basis. Partial payments will not be allowed as outlined in the General Conditions.

### **Concrete Sidewalk Restoration, 4" (ITEM B-S-2)**

Payment for concrete driveways of the thickness specified (6") and concrete sidewalks of the thickness specified (4") will be paid for at the Contract unit price per square foot, based on field measurements. The price paid shall be payment in full for dewatering, grading, concrete saw cutting, the removal and disposal of unsuitable material, furnishing and placement of all driveway materials, transportation, equipment, labor, subgrade stabilization, compaction, reinforcement, jointing, finishing, material testing and all other incidentals necessary to complete this item.

Measurement for payment of this Pay Item shall be the measured in place square feet (SF) of Concrete Driveway Reconstruction completed and accepted.

Field layout, coordination with residents, coordination with the CITY and revisions to field layout are all components of work for driveway restoration (all kinds).

### **Concrete Curb Removal & Replacement (ITEM B-S-3)**

Payment for curbing will be paid for at the Contract Unit Price per linear foot, based on field measurements. The price paid shall be payment in full for excavation, construction of crushed concrete curb pad, dewatering, grading, furnishing and placing of all curb materials, transportation, equipment, labor, compaction, formwork, curb transitions, drainage structure transitions and throats, reinforcement, jointing, finishing, providing protection against rain and cold weather, material testing, protection of work and all other incidentals necessary to complete these items.

The quantity of concrete curb to be paid for shall be determined from field measurements of the amount satisfactorily constructed, measured in linear feet along the front face of the curb.

Expansion joint material, where called for on the plans or required, shall be included in this pay item.

### **Roadway, Base Restoration (ITEM B-S-5)**

Payment for the restoration of roadways shall be made on a per square yard restored basis and shall include all necessary equipment, materials and labor required to complete this item. Work activities to be covered under this pay item shall include, but not be limited to, the following: excavation, removal of excess material, undercutting where required, furnishing fill, subgrade and base material, placement of fill, subgrade and base material per the specifications, compaction of fill, subgrade, and base in accordance with the specifications, stabilization of subgrade, grading as needed to achieve proposed pavement elevations, application of prime and tack coats, furnish and place asphalt, compaction, testing and all incidental items required to complete this pay item. Roadway restoration shall be in compliance with all plan and specification requirements.

### **Roadway, Mill & Resurface, 1-1/2" Restoration (ITEM B-S-6)**

Payment for milling existing asphalt shall be paid for at the unit price per square yard, which price will be full compensation for removal (milling) of existing asphaltic concrete wearing surface (as shown on the Plans) to the depth of 1-1/2", survey, leveling, dewatering, transportation, testing, labor, equipment, and other incidentals necessary to complete this item.

The Contractor shall take ownership of all millings.

The Contractor will only be compensated for milling performed at locations specifically stated on the plans. Additional milling shall be performed at the Contractor's expense.

### **Excavation, Unsuitable Material (ITEM A-M-1)**

### **Excavation, Unsuitable Material (ITEM B-M-1)**

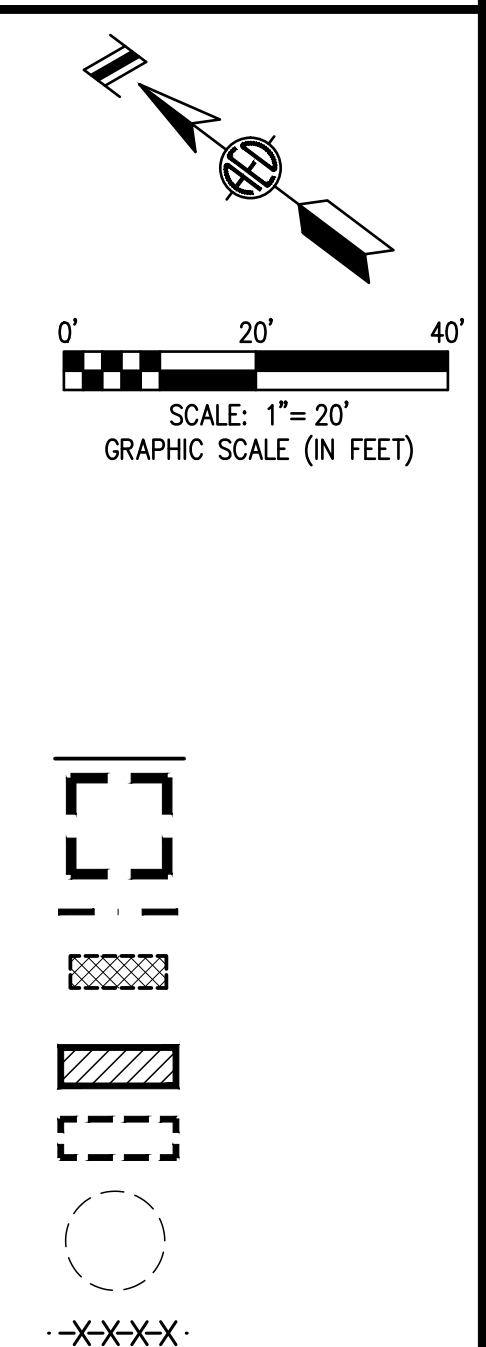
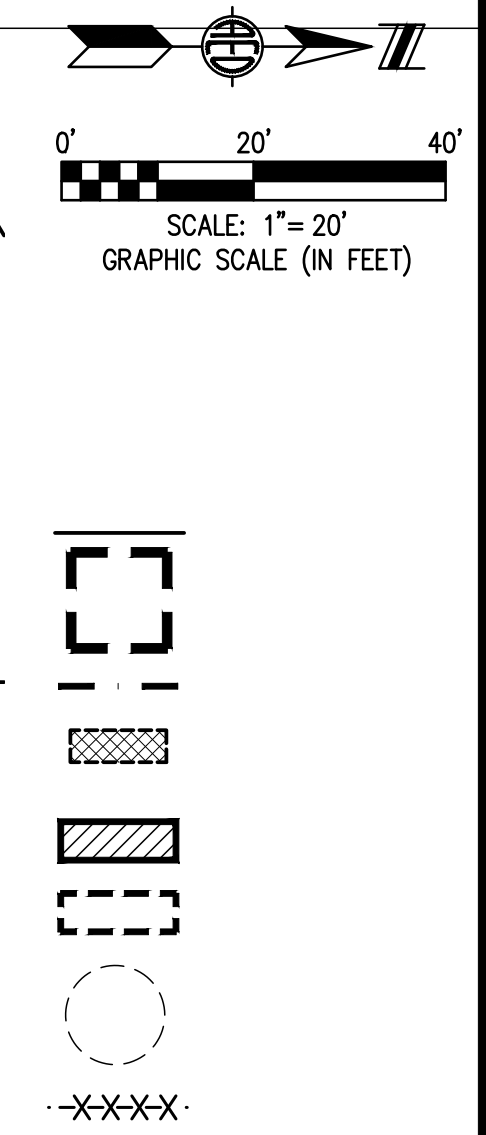
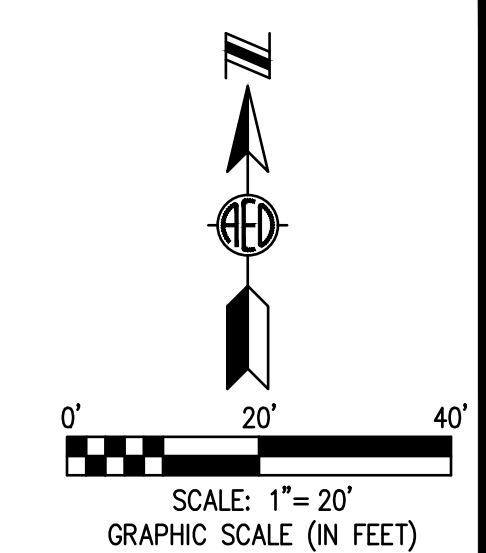
The above pay item shall include payment for removing (from the site) and properly disposing of material deemed unsuitable for use. Work activities to be covered under this pay item shall include, but not be limited to, the following: coordination with City staff, quantity tracking using a City-approved approach, material testing to confirm suitability of existing site material, excavation, sheeting/shoring/slope protection, separation of suitable and unsuitable material, removal of rocks/boulders/debris from unsuitable material, dewatering of excavated material, temporary storage of material to be onsite, all trucking and transportation costs, furnishing and installing suitable material and all other incidentals necessary to complete this item. Payment for this item shall be on a per cubic yard of unsuitable material excavated, removed, disposed and replaced basis and shall include all necessary equipment, labor and materials to complete this pay item.

It shall be noted that this pay item is only applicable for the removal of material which currently is onsite. Any unsuitable material imported by the Contractor shall be removed (and disposed of) at no additional cost to the City. Written approval from the City/Engineer shall be provided prior to utilization of this pay item.

Measurement for payment for this item shall be per Cubic Yard (CY) of field measurement of volume per truck load or container of material removed and disposed.

**End of Section**

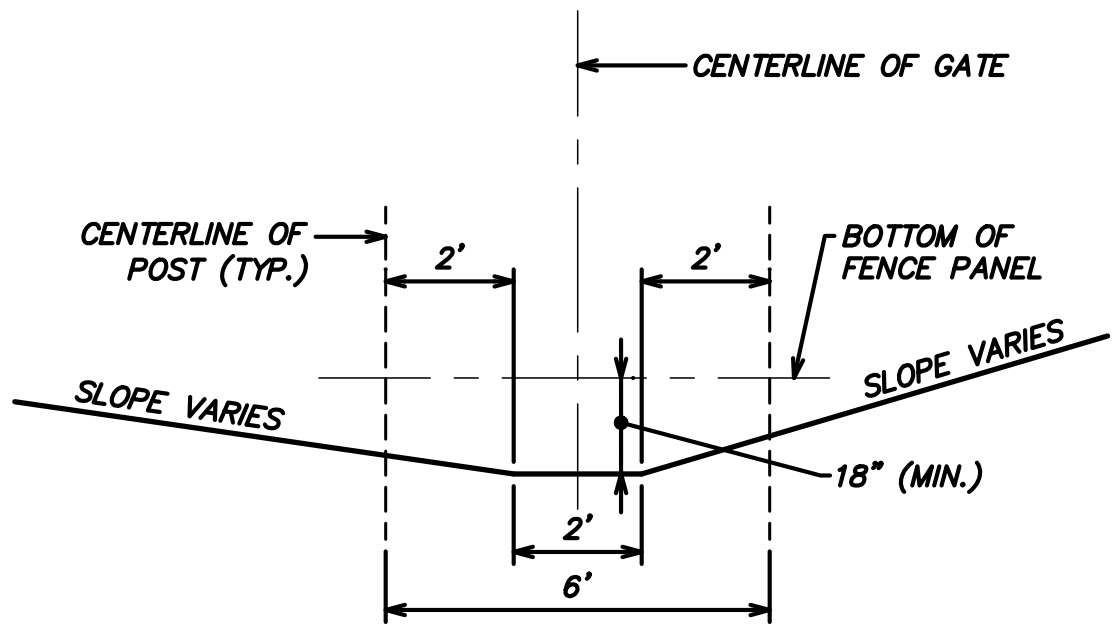
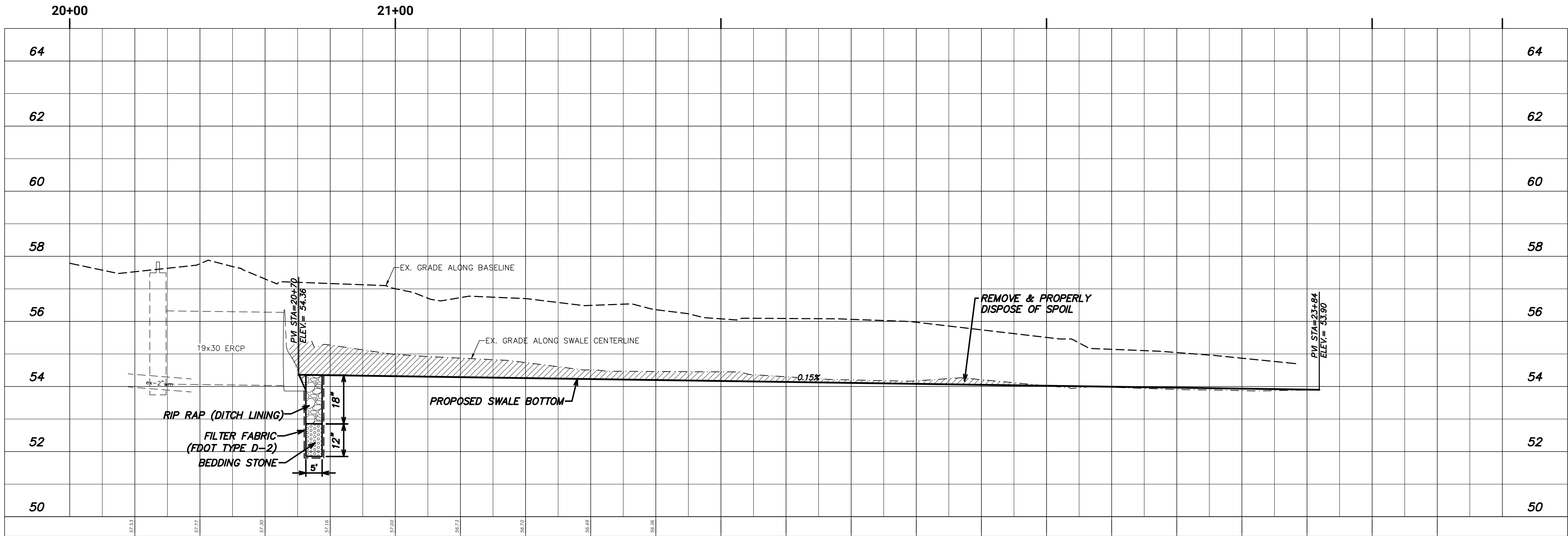
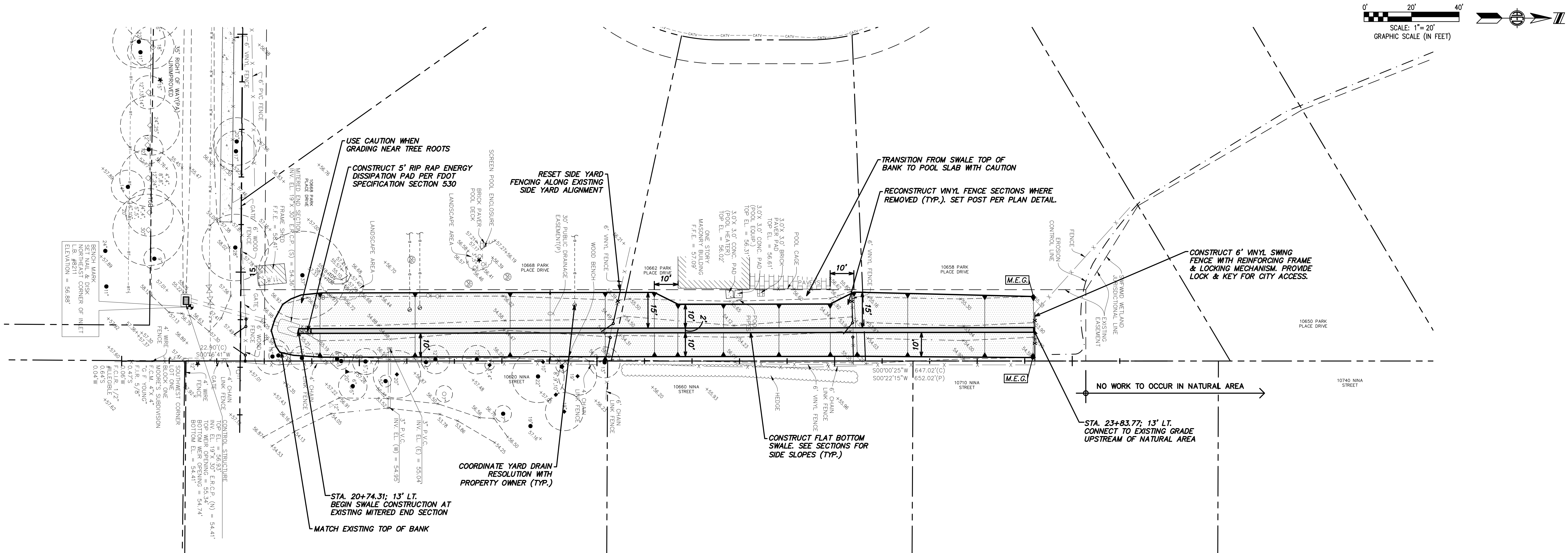




SCALE:	1"=20'
DRAWN:	S.A.T.
DESIGNED:	A.E.D.
APPROVED:	J.V.K.

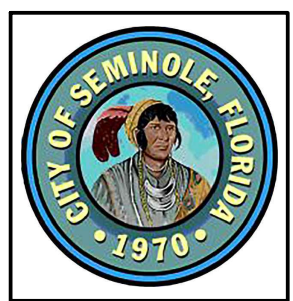



USER: [Steven.Torres] Date: [Mar 28, 2025] Time: [5:25pm] File Location: [M:\Public\Seminole\24.sem-36 (fy25 stormwater improvements)\Cadd\Current\SEM-36\_P&P\_Appendum2.dwg]



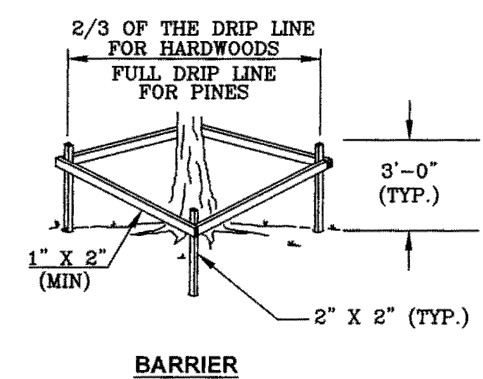
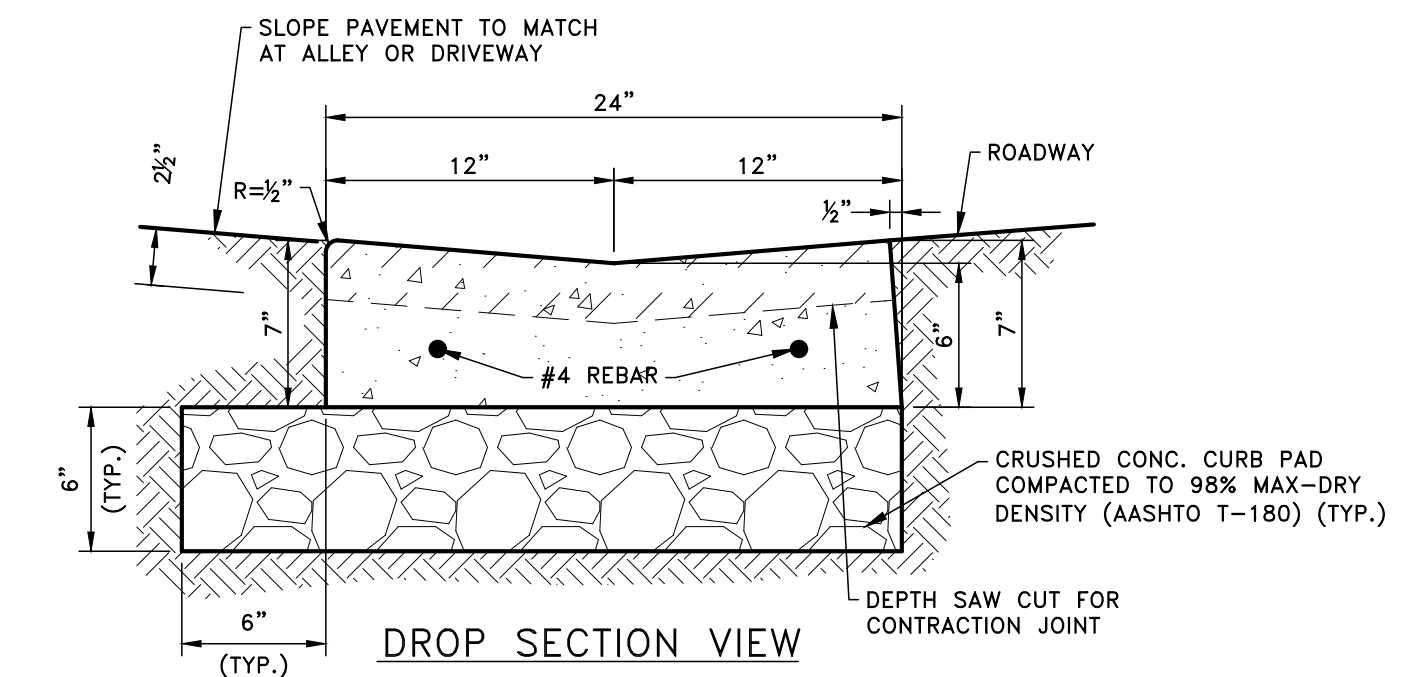
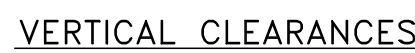
NO.	REVISIONS	BY	DATE

SCALE: 1"=20' (HORZ.)  
1"=2' (VERT.)  
DRAWN: S.A.T.  
DESIGNED: A.E.D.  
APPROVED: J.V.K.



FY25 STORMWATER IMPROVEMENTS





## FY25 STORMWATER IMPROVEMENTS